

V0.1

# BLASTHOME™

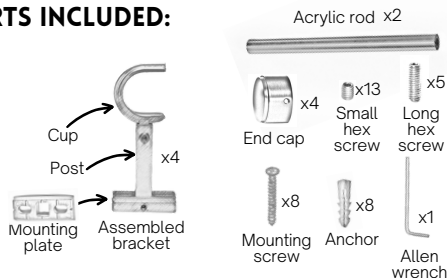
## EASY MOUNT INSTALLATION INSTRUCTIONS FOR: 17"

Signature Collection  
Side Mount Acrylic Rod Sets



**TIP:** We recommend holding the allen wrench vertically (as shown in the "parts included" section) and then putting the hex screw on top for easy handling and insertion into bracket.

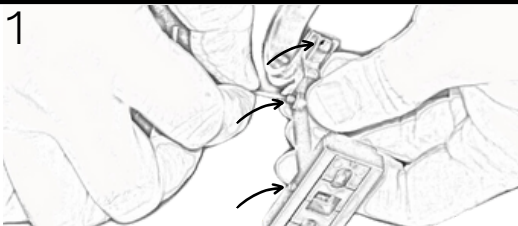
### PARTS INCLUDED:



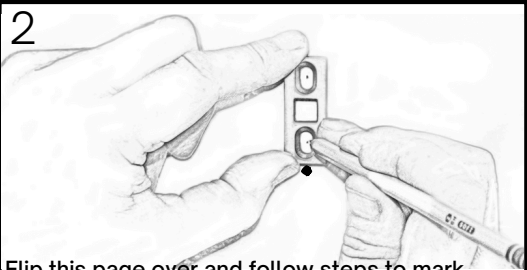
#### Tools needed:

Level, measuring tape, pencil, drill, 1/4" drill bit, hammer

**NOTE:** A hex screw can run away, so we've included one extra each!



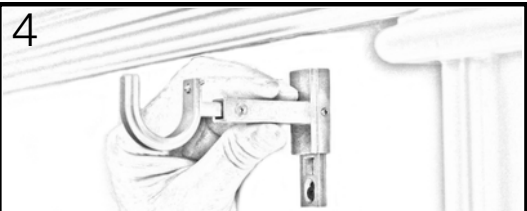
Insert small hex screws into all bracket post locations and on all end caps, but do not tighten yet. Next, slightly insert long hex screw into bracket cups. Then, secure mounting plate hex screw in only one bracket.



**Flip this page over and follow steps to mark bracket locations.** Then, remove mounting plate, align marking notches and mark mounting screw locations as shown.



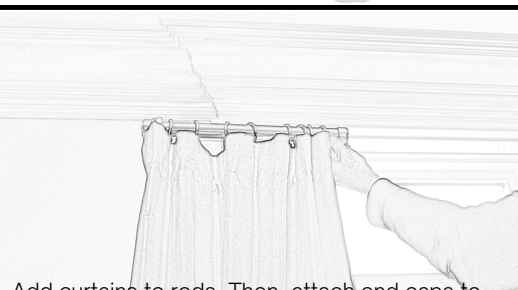
For walls with studs aligned, attach mounting plates by drilling in mounting screws (as shown). Alternatively, for dry wall, pre drill 1/4" holes with drill bit. Then, simply tap anchors into place with hammer and drill in mounting screws.



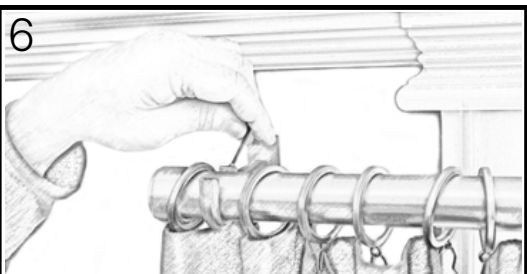
Slide bracket posts over mounting plates and insert bracket cups. Tighten small hex screws into posts at desired length. At this point, add rods to check level. Slight adjustments can be made by moving mounting plates up or down if needed.



**FUN FACT:** Our strong brackets have tested to hold 15lb each!



Add curtains to rods. Then, attach end caps to both ends of rods and tighten small hex screws on each end cap. Lastly, lift rods onto brackets.



Tighten long cup hex screws to secure rods in place. Enjoy your beautiful new window from your friends at BlastHome :)

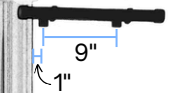
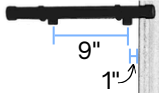
# EASY MOUNT BRACKET PLACEMENT GUIDE

Left locations

Right locations

Outside bracket    Inside bracket

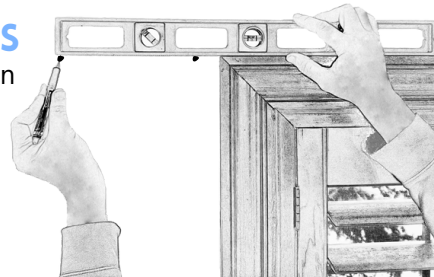
Inside bracket    Outside bracket



**Tools needed:**  
Level, measuring tape, pencil, drill, 1/4" drill bit, hammer, phillips-head drill bit

## 1 MARK LEFT BRACKET LOCATIONS

To mark inside bracket location, place level on molding and mark 1 inch from molding. Then, mark outside bracket location 9 inches away from first mark. As shown:



**TIP:**

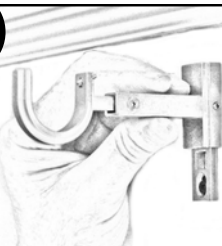
**Mounting height** depends on your curtain and hanging style. For example, curtains with grommets will hang higher than curtains with rings. There is also the option to puddle curtains on floor. We recommend getting a friend to help hold up your curtain with a rod section and fully assembled bracket to mark your desired height.

## 2 MARK RIGHT BRACKET LOCATIONS

Repeat step 1 to mark the right locations.

## 3 CONTINUE INSTALLATION

Flip back over and continue following steps 2-6 per installation instructions.



Ensure **2" vertical clearance** when mounting so brackets can slide over mounting plate. If no clearance, our brackets are designed to mount horizontally too. To mount horizontally remove cup from post and rotate cup upward.



BLASTHOME™