

V2.1

BLASTHOME™

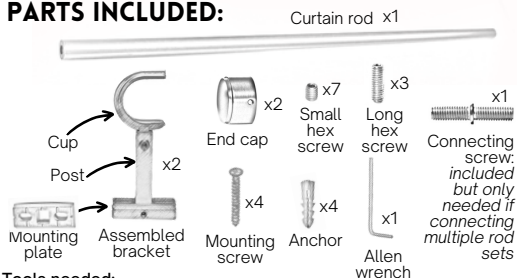
EASY MOUNT INSTALLATION INSTRUCTIONS FOR:

3' | 3 1/2' | 4' | 4 1/2'
Signature Collection Rod Sets



TIP: We recommend holding the allen wrench vertically (as shown in the "parts included" section) and then putting the hex screw on top for easy handling and insertion into bracket.

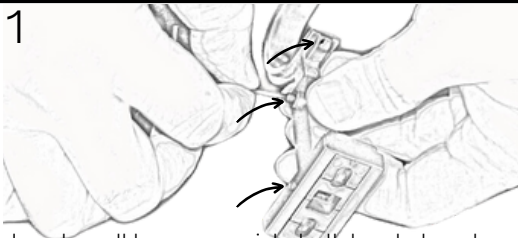
PARTS INCLUDED:



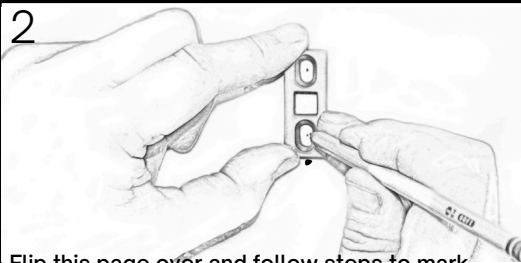
Tools needed:

Level, measuring tape, pencil, drill, 1/4" drill bit, hammer

NOTE: A hex screw can run away, so we've included one extra each!



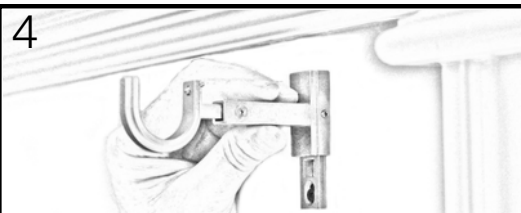
1
Insert small hex screws into both bracket post locations and on both end caps, but do not tighten yet. Next, slightly insert long hex screw into bracket cups. Then, secure mounting plate hex screw in only one bracket.



2
Flip this page over and follow steps to mark bracket locations. Then, remove mounting plate, align marking notches and mark mounting screw locations as shown.



3
For walls with studs aligned, attach mounting plates by drilling in mounting screws (as shown). Alternatively, for dry wall, pre drill 1/4" holes with drill bit. Then, simply tap anchors into place with hammer and drill in mounting screws.



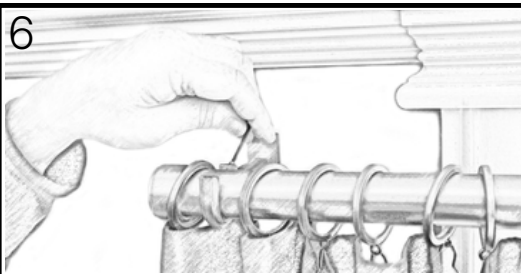
4
Slide bracket posts over mounting plates and insert bracket cups. Tighten small hex screws into posts at desired length. At this point, add rod to check level. Slight adjustments can be made by moving mounting plates up or down if needed.



FUN FACT: Our strong brackets have tested to hold 15lb each!

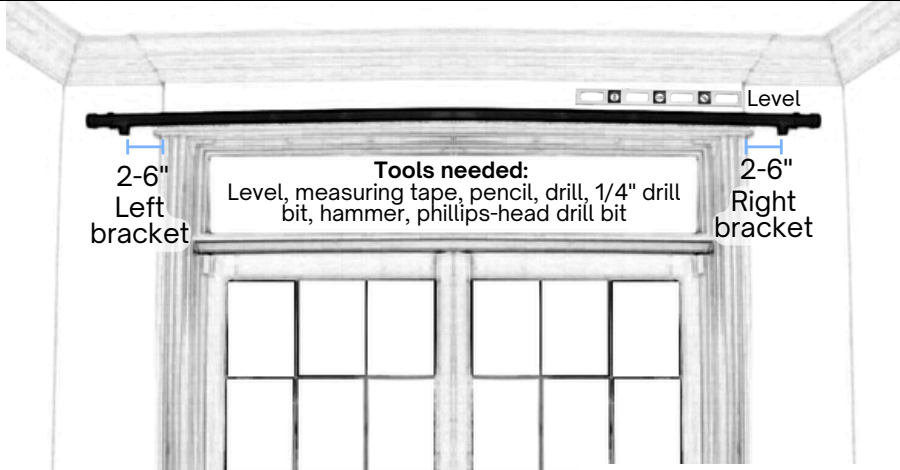


5
Add curtains to rod. Then, attach end caps to both ends of rod and tighten small hex screws on each end cap. Lastly, lift rod onto brackets.



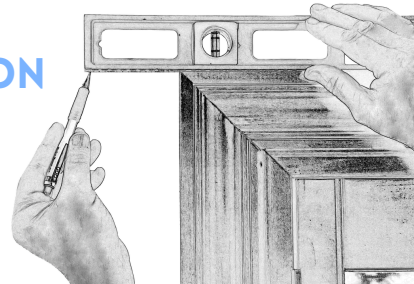
6
Tighten long cup hex screws to secure rod in place. Enjoy your beautiful new window from your friends at BlastHome :)

EASY MOUNT BRACKET PLACEMENT GUIDE



1 MARK LEFT BRACKET LOCATION

To mark at minimal height needed for use with support bracket, place level on molding and mark 2-6 inches from molding, as shown.



Mounting height depends on your curtain and hanging style. For example, curtains with grommets will hang higher than curtains with rings. There is also the option to puddle curtains on floor. We recommend getting a friend to help hold up your curtain with a rod section and fully assembled bracket to mark your desired height.

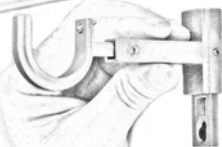
TIP:

2 REPEAT FOR RIGHT

Repeat step 1 to mark right bracket location.

3 CONTINUE INSTALLATION

Flip back over and continue to follow steps 2-6 per installation instructions.



Ensure **2" vertical clearance** when mounting so brackets can slide over mounting plate. If no clearance, our brackets are designed to mount horizontally too. To mount horizontally remove cup from post and rotate cup upward.



BLASTHOME™